

Standard Scope of Supply

DG Set

- Common Base Frame
- 990 litres day tank
- Exhaust Silencers
- One Set of SS bellows (after turbo – before silencers)
- One Set of Lead Acid Batteries and battery cables (as per Standard Specifications)
- Anti-Vibration Mounts between Engine/Radiator/Alternator and Base Frame
- Set of literature

Engine

- Fluid Cooled Diesel Engine
- Dry Type Air Cleaner Elements fitted on Engine
- One Set of Fuel and Lube oil filters fitted on the Engine
- Radiator Designed for 50 °C Ambient
- Radiator Fan and fan drive
- Fuel Cooler
- 24V DC Electric Starter
- Charging Alternator
- Earthing of Engine and Radiator on Base frame
- First Fill of Lube Oil
- First Fill of Coolant

Optional items

DG Set

- DG Control Panel with Synch Relay (DSE 8610 MK II)
- Acoustic Enclosure (Standard Acoustic Enclosure to meet CPCB guidelines. Also, option of Special Acoustic Available for higher sound attenuation and customised requirements)
- Critical Grade Silencers
- Extended Warranty

Alternator

- IP-23 Rating, Single Bearing Alternator
- Earthing of Alternator on Base frame

DC Control Panel

- RAL 9003 White powder coated control panel manufactured with CRCA sheet
- AMF Relay (DSE 7320 MK II)
- Battery Charger
- Emergency Stop Switch
- DC Powered LED light inside Control Panel
- Indicating lamps for "Load on" and "Set Running Earthing of Alternator on Base frame"

Warranty

For Prime Rating & DCC Rating DG Sets, 30 months from the date of invoice or 24 months from the date of commissioning or 5000 operational hours whichever occurs first. In addition to the above, warranty of 5 Years or 5000 hours of operation from the date of sale or commissioning will be extended for 5 C components.

Engine

- HE Cooled Engine
- Remote Radiator Cooled Engine

Alternator

- Higher Frame Alternators



SMART & RELIABLE POWER SOLUTIONS

Product Brochure: 1010-2250 kVA



163+ Years of Product Legacy

Strong Service Network

Greaves Power has a strong network of 120+ dealers spread all across the country. Our wide spread presence ensures timely reach of spares and services to end users across the country.



One stop power solution with DG sets ranging from 5 kVA to 2500 kVA.

Greaves Cotton - A Legacy of Excellence

- Well diversified business includes manufacturing of Engines, DG Sets, e-Vehicles, Farm Equipments and Pump Sets
- Strong in-house R&D and Engineering capability
- Delivering technological solutions that add value for our customers
- Global footprint with local presence in SAARC, Africa and Middle-East



Power Generation Business

- A Pioneer with over 5 decades of DG Sets Manufacturing and Product Support in the Country
- New Genset manufacturing facility at Pune with annual capacity of more than 9000 Gensets
- Fuel-efficient, rugged and reliable
- Total solutions by single point of contact for engineering design, sales, service & spare parts
- In-house technical capability to handle projects

Concept to commissioning turnkey solutions for DG projects.

GREAVES COTTON LIMITED

Auxiliary Power Business: Greaves Cotton Ltd Genset/SPD (Talegaon MIDC) G No, 39,45 & 48, Greaves Cotton Ltd Jadhavwadi, Jadhavwadi, Tal Maval Pune, Maharashtra – 410 507. Landline: +91-2135-668872

Corporate Office: Unit No.1A, 5th Floor, Tower 3, Equinox Business Park, LBS Marg, Kurla West, Mumbai - 400070, India. Landline: +91-22-41711700

Registered Office: J-2, MIDC Industrial Area, Chikalhana, Aurangabad (Chhatrapati Sambhajnagar) – 431210, India

Regional Offices: Pune, Bangalore, Delhi and Kolkata



ISO 9001:2008 certified by



ISO 14001:2004 certified by



Email: info@greavescotton.com
www.greavescotton.com
 Call Center Number: 1800 266 0670



GET IT ON Google Play



Download on the App Store



Greaves Advantage

- › India's leading diversified engineering company with over 163+ years of legacy
- › Greaves Power provides one-source responsibility for Turnkey DG power solutions
- › Smaller footprint
- › Extensive Service Network: Over 120+ Nationwide well established Service network that ensures faster response time
- › 24 x 7 Service support through "Greaves 1" APP and Toll-Free number 1800 266 0670
- › ARAI approved state-of-the-art Engine testing facility
- › Advanced Engine manufacturing facility at Aurangabad for multi-cylinder / higher HP Engines
- › State-of-the-art DG Set manufacturing facility at Talegaon (Pune)

Product Advantage

DG Set

- › Ratings are in accordance with ISO-8528/1
- › Robust Construction
- › Fuel-efficient, rugged and reliable
- › Engineered to the finest detail
- › Ease of operation and maintenance
- › Compact design with low footprint
- › IOT Enabled, for ease of monitoring

Engine

- › Designed in accordance to IS 3046/1 and BS 5514
- › Best in class fuel consumption
- › Engine and Radiator designed for 50 °C Ambient
- › High Power Density Engine
- › Excellent Block Loading Capability
- › Rugged and Reliable
- › 5C warranty applicable for Crank Case, Crank Shaft, Cam Shaft, Connecting Rod and Cylinder Head

Acoustic Enclosure

- › Acoustic Panel manufactured out of 2mm thick CRCA Sheets
- › SS Hinges and door locks
- › LED lighting inside the canopy provided as standard
- › 230V AC Power Points provided as standard
- › Canopy Temperature Switch provided as standard

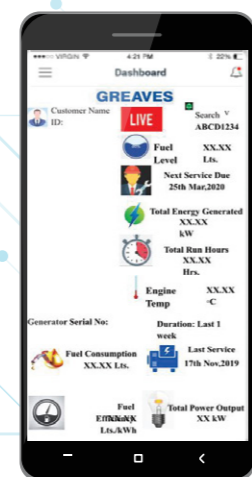
Alternator

- › Designed in accordance relevant parts of IEC EN 60034 / IS:13364 / IS 4722
- › Choice of Higher Frame Alternators Available
- › RTD / BTD (without scanner) and Space Heaters are provided as standard for 1010 kVA and above
- › Option of CG / LeroySomer / Stamford make Alternators

Remote Monitoring System

- › Separate microcontroller
- › Onboard memory with SD card
- › Input and output for easy integration
- › Battery backup
- › RS 485 port
- › Dual SIM support
- › Surge and reverse power protection
- › Wall and DIN mounting
- › 3 LED indicator for GPS, GSM and data capture
- › Secure by design and predefined access control
- › Temper proof design
- › Dynamic data collection
- › Multi-protocol and controller support
- › Cross-platform compatibility
- › Real-time clock
- › External GSM and GPRS antenna support
- › Rapid data gathering

Real-time Access via



Technical Specifications

DG Power (kVA / kWe) DG Model	1010 / 808 GPW - 1010		1250 / 1000 GPW - 1250		1500 / 1200 GPW - 1500		2000 / 1600 GPW - 2000		2250 / 1800 GPW - 2250**
Rating	Prime		Prime		Prime		Prime		DCC
Engine Cooling Arrangement	Radiator Cooled	Heat Exchanger	Radiator Cooled	Heat Exchanger	Radiator	Heat Exchanger	Radiator	Heat Exchanger	Radiator
Voltage (V) / Frequency (Hz) / PF	415 / 50 / 0.8		415 / 50 / 0.8		415 / 50 / 0.8		415 / 50 / 0.8		415 / 50 / 0.8
Current @ 0.8 PF (Amps)	1405	1405	1740	1740	2085	2085	2780	2780	3128
Battery Capacity (AH)	2 x 180		2 x 180		2 x 200		2 x 200	2 x 220	2 x 220
Fuel Tank Capacity (L)	990 ⁽¹⁾		990		990		990		990
Silencer type	Residential		Residential		Residential		Residential		Residential
Open Set L x B x H (mm)	4329 x 2007 x 2391	4254 x 1731 x 2105	4472 x 2208 x 2650	4254 x 1731 x 2105	4472 x 2208 x 2650	4350 x 1731 x 2093	5405 x 2835 x 3055	5433 x 2231 x 2593	7500 x 2756 x 2870
With Acoustic Enclosure L x B x H (mm) ⁽²⁾	7400 x 2435 x 4699	7400 x 2435 x 4699	7500 x 2870 x 5036	7500 x 2870 x 5036	7500 x 2870 x 5036	7500 x 2870 x 5036	9700 x 3550 x 4800	9700 x 3550 x 4800	12000 x 4000 x 4000
"Approx Weight (kg) (Wet weight with acoustic enclosure)"	10,500	10,200	13,000	12,000	14,000	13,500	18,300	17,500	-
Engine									
Engine Model	GPW -1010		GPW-1250		GPW-1500		GPW-2000		GPW - 2250
Engine Power Gross (BHP / kWm)	1192 / 889		1475 / 1100		1810 / 1350		2414 / 1800		-
Engine Speed (RPM)	1500		1500		1500		1500		1500
No. of Cylinders	12		12		12		TCAC		20
Cylinder Arrangement	Vee		Vee		Vee		Vee		Vee
Compression Ratio	15.7		15		15		14		15
Bore x Stroke (mm)	150 x 150		150 x 185		150 x 185		150 x 185		150 x 185
Cubic Capacity (L)	31.8		39.2		39.2		52.3		65.4
Aspiration	TCAC		TCAC		TCAC		TCAC		TCAC
Governing / DG Performance Class	Elec / G3		Elec / G3		ECU		ECU		ECU
Starting System	24V DC		24V DC		24V DC		24V DC		24V DC
Charging Alternator	Standard supply		Standard supply		Standard supply		Standard supply		-
Lube Oil Sump Capacity with Filter (L)	114	114	155	155	155	155	175	175	240
Lube Oil Specification	15W40, API CI4+, Greaves Maxtherm	15W40, API CI4+, Greaves Maxtherm	15W40, API CI4+, Greaves Maxtherm	15W40, API CI4+, Greaves Maxtherm	15W40, API CI4+, Greaves Maxtherm	15W40, API CI4+, Greaves Maxtherm	15W40, API CI4+, Greaves Maxtherm	15W40, API CI4+, Greaves Maxtherm	15W40, API CI4+, Greaves Maxtherm
Cooling system capacity, including engine (L)	200	⁽³⁾	250	⁽³⁾	310	⁽³⁾	542	⁽³⁾	410
Alternator									
Alternator Make Options Available	LS / Stamford / CG		LS / Stamford / CG		LS / Stamford / CG		LS / Stamford / CG		LS / Stamford / CG
No. of Phases	3		3		3		3		3
Insulation Class	H		H		H		H		H
Ingress Protection Class	IP 23		IP 23		IP 23		IP 23		IP 23
DG Control Panel									
Controller model	DSE 7320 MK-II		DSE 7320 MK-II		DSE 7320 MK-II		DSE 7320 MK-II		DSE 7320 MK-II
Battery Charger	Option of DSE 8610 MK-II is available		Option of DSE 8610 MK-II is available		Option of DSE 8610 MK-II is available		Option of DSE 8610 MK-II is available		-
DGCP Illumination Lamp	Standard supply		Standard supply		Standard supply		Standard supply		-
IOT Enabled Genset	Standard supply		Standard supply		Standard supply		Standard supply		-

Disclaimer: Data subject to change without prior notice due to continuous improvement

Note:

⁽¹⁾1010 kVA DG with acoustic enclosure will have fuel tank mounted inside the canopy, including connectivity between tank and engine

⁽²⁾Height of DG with Acoustic Enclosure is including Exhaust silencers

⁽³⁾ Please contact Greaves for specific requirement

Standby ratings are also available, please contact for details

DG Rating Definition:

Prime Power Rating:

In accordance with ISO 8528/1 Prime Power rating is applicable for supplying power to variable electrical loads for unlimited operating hours. In accordance with ISO 3046 and IS 13018, 10% overload for 1 hour in every 12 hours of operation is available.

DCC Power Rating:

In accordance with ISO 8528/1 Data Centre Continuous rating is applicable for supplying power to variable electrical loads for unlimited operating hours. 10% overload provision is not applicable for this rating. Prolonged operation at load in parallel with a utility is not permitted.